

Engineered for Performance and Reliability

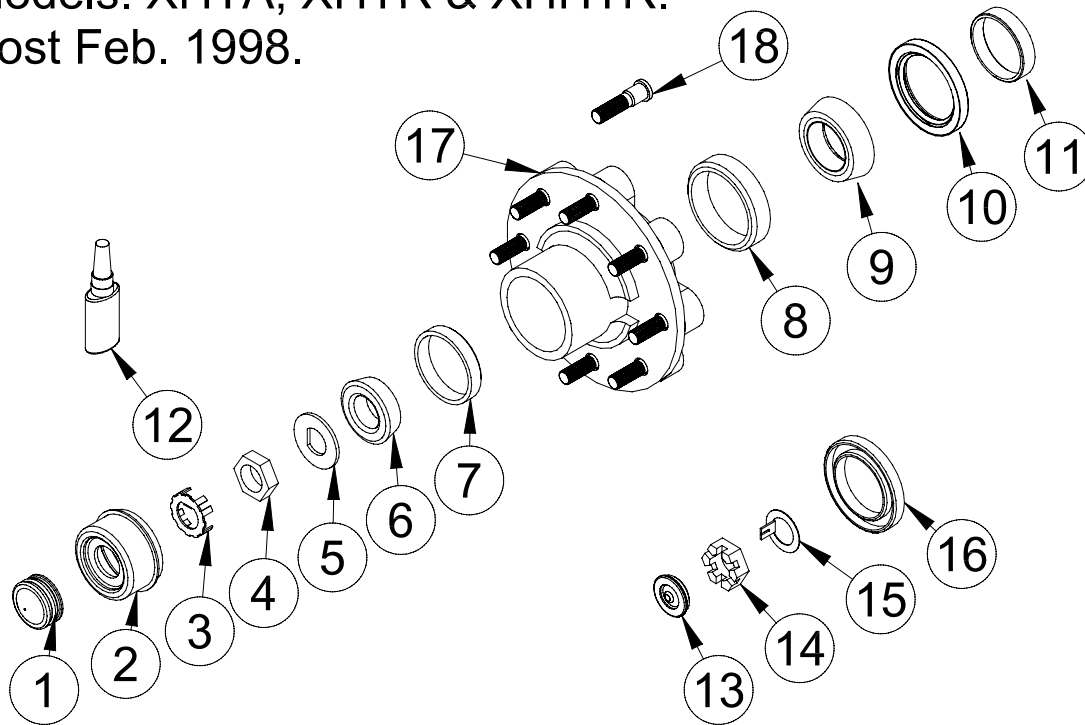
MYCO TRAILERS, LLC.

Bearing Set

8 lug, 6000 & 7000 lb axles

Models: XHTA, XHTR & XHHTR.

Post Feb. 1998.



Key No.	Part Number	Quan.	Description
01	1600750	01	Diaphragm, rubber, Sport cap.
02	1600550	01	Cap, Grease, 8-lug. Superseded 1600500.
03	3404050	01	Clip, Retainer. Post 2002. Superseded 3606500 plus 3404000
04	3404075	01	Nut, Jam, 1". Post 2002. Superseded 3404000 plus 3606500.
05	3606800	01	Washer, "D" Large. 1" Hole.
06	0601100	01	Bearing, outer. #14125A.
07	0601200	01	Race, outer. #14276.
08	0600800	01	Race, inner. #25520.
09	0600700	01	Bearing, inner. #25580.
10	6200675	01	Seal, grease, double lip, Viton, 2.50 ID x 3.376 bore, AT-5300. Post March 2006.
11	6200120	01	Bushing, wear band, 2.25 ID x 2.50 OD. Post March 2006.
12	9608037	01	Bonding Agent, 10ml.
13	1600700	01	Plug, rubber, EZ-Lube. Pre March 2006.
14	3404000	01	Nut, castler, 1". Pre 2002.
15	3606500	01	Washer, locking, tang, 1". Pre 2002.
16	6201110	01	Seal, unitized, 2.25 spindle. Pre March 2006.
17	1801680	01	Hub, Idler 865 with long studs and races.
18	9200500	08	Stud, long 1/2-20 x 2.09 drive in. DX 007-150-00.