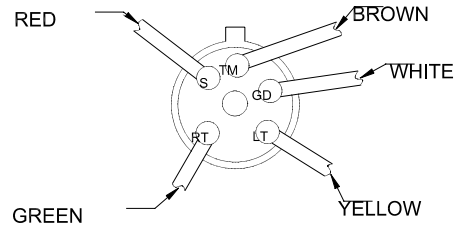
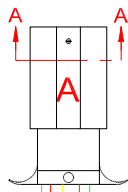


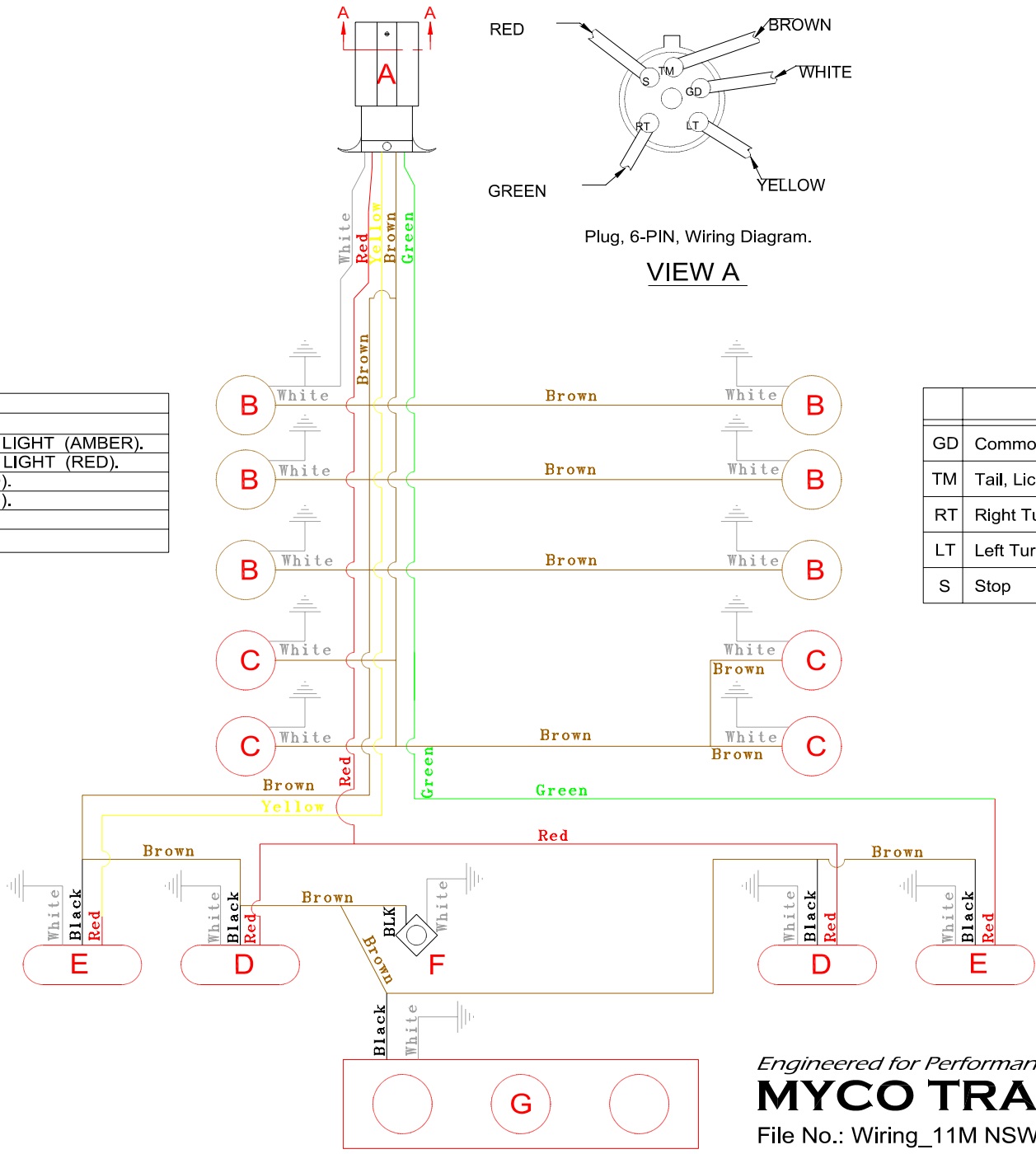
# NSW 11M RIB Articulating Air Transportable, Wiring Diagram, 12 Volt.

ID	ITEM	DESCRIPTION
A	6800900	6-PIN PLUG.
B	2802365	MARKER/CLEARANCE LIGHT (AMBER).
C	2802360	MARKER/CLEARANCE LIGHT (RED).
D	2803030	STOP TAIL LAMP (RED).
E	2803030	TURN/TAIL LAMP (RED).
F	2803600	LICENSE TAG LIGHT.
G	2800820	I.D. BAR LIGHT.



Plug, 6-PIN, Wiring Diagram.

## VIEW A



CIRCUIT	
GD	Common Ground.
TM	Tail, License, and Running light.
RT	Right Turn
LT	Left Turn
S	Stop

Engineered for Performance and Reliability  
**MYCO TRAILERS, LLC.**  
 File No.: Wiring\_11M NSW RIB\_12volt.ckd