

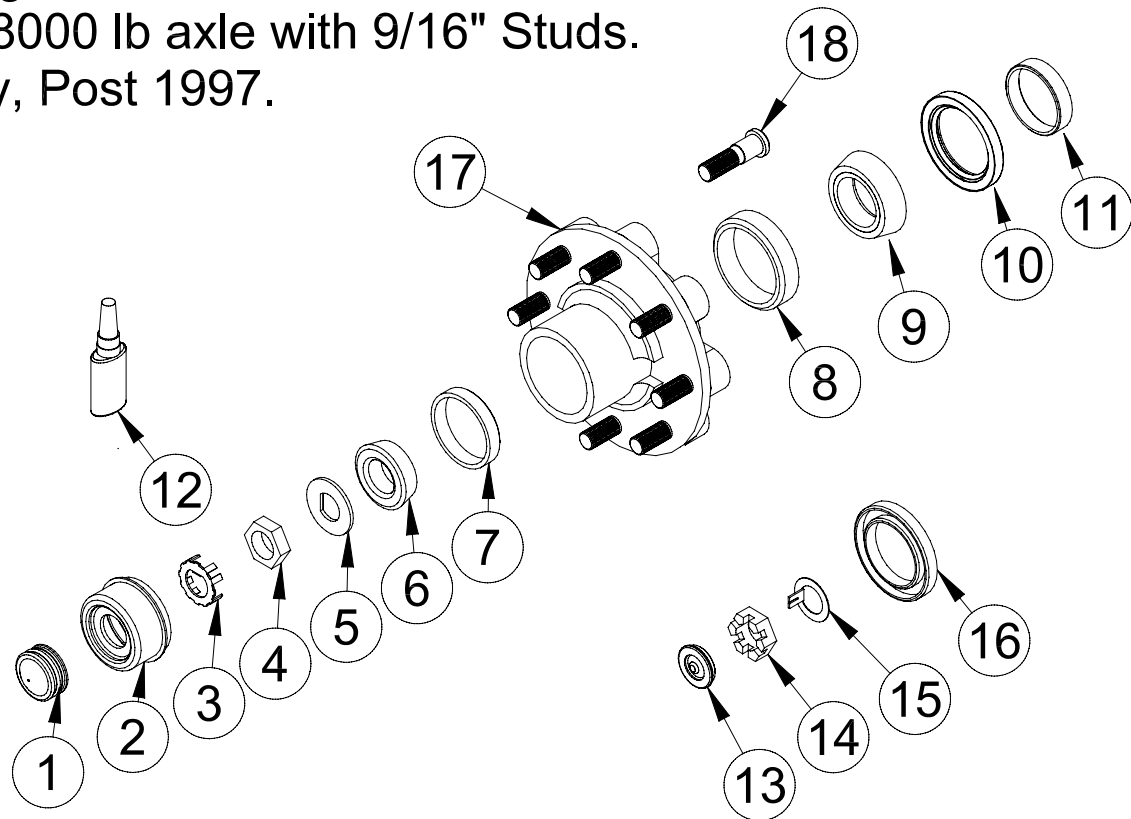
Engineered for Performance and Reliability

MYCO TRAILERS, LLC.

Bearing Set

8 lug, 8000 lb axle with 9/16" Studs.

Military, Post 1997.



Key No.	Part Number	Quan.	Description
01	1600750	01	Diaphragm, rubber, Sport cap.
02	1600550	01	Cap, Grease, 8-lug. Superseded 1600500.
03	3404050	01	Clip, Retainer. Post 2002. Superseded 3606500 plus 3404000
04	3404075	01	Nut, Jam, 1". Post 2002. Superseded 3404000 plus 3606500.
05	3606800	01	Washer, "D" Large. 1" Hole.
06	0601350	01	Bearing, outer 8-lug hub. #02475.
07	0601300	01	Race, outer 8-lug hub. #02420.
08	0600800	01	Race, inner. #25520.
09	0600700	01	Bearing, inner 8-lug hub. #25580.
10	6200675	01	Seal, grease, double lip, Viton, 2.50 ID x 3.376 bore, AT-5300. Post Oct. 2008.
11	6200120	01	Bushing, wear band, 2.25 ID x 2.50 OD. Post Oct. 2008.
12	9608037	01	Bonding Agent, 10ml.
13	1600700	01	Plug, rubber, EZ-Lube. Pre Oct. 2008.
14	3404000	01	Nut, castler, 1". Pre 2002.
15	3606500	01	Washer, locking, tang, 1". Pre 2002.
16	6201110	01	Seal, unitized, 2.25 spindle. Pre Oct. 2008.
17	1801750	01	Hub, Idler 865, 8K with 9/16-18 studs and races.
18	9200550	08	Stud, long 9/16-18 x 2.32 drive in. DX 007-132-00.